



NAME: \_\_\_\_\_ Birth Day (d/m/yy): \_\_\_\_/\_\_\_\_/20 \_\_\_\_ M  F   
 Gestational Age: \_\_\_\_\_ Birth Length: \_\_\_\_\_ cm Birth Weight: \_\_\_\_\_ g  
 Birth Head Circumference: \_\_\_\_\_ cm Discharge Weight: \_\_\_\_\_ g

Pregnancy/Birth remarks/Appgar: \_\_\_\_\_ Risk factors/Family history: \_\_\_\_\_  
 \_\_\_\_\_  
 \_\_\_\_\_

WITHIN 1 WEEK	2 WEEKS (OPTIONAL)	1 MONTH
---------------	--------------------	---------

DATE OF VISIT ____/____/20____	DATE OF VISIT ____/____/20____	DATE OF VISIT ____/____/20____
--------------------------------	--------------------------------	--------------------------------

**GROWTH<sup>1</sup>** use [WHO growth charts](#). Correct age until 24–36 months if < 37 weeks gestation

Length	Weight	Head Circ. (avg 35 cm)	Length	Weight (regains BW 1–3 weeks)	Head Circ.	Length	Weight	Head Circ.
--------	--------	---------------------------	--------	----------------------------------	------------	--------	--------	------------

**PARENT / CAREGIVER CONCERNS**

--	--	--

**NUTRITION<sup>1</sup>** For each  item discussed, indicate “✓” for no concerns, or “X” if concerns

<input type="radio"/> <b>Breastfeeding (exclusive)<sup>1</sup></b> <input type="radio"/> Vitamin D 400 IU/day <sup>1</sup> <input type="radio"/> <b>Formula feeding/preparation<sup>1</sup></b> [150 mL(5 oz)/kg/day <sup>1</sup> ] <input type="radio"/> Stool pattern and urine output	<input type="radio"/> <b>Breastfeeding (exclusive)<sup>1</sup></b> <input type="radio"/> Vitamin D 400 IU/day <sup>1</sup> <input type="radio"/> <b>Formula feeding/preparation<sup>1</sup></b> [150 mL(5 oz) /kg/day <sup>1</sup> ] <input type="radio"/> Stool pattern and urine output	<input type="radio"/> <b>Breastfeeding (exclusive)<sup>1</sup></b> <input type="radio"/> Vitamin D 400 IU/day <sup>1</sup> <input type="radio"/> <b>Formula feeding/preparation<sup>1</sup></b> [450–750 mL(15–25 oz) /day <sup>1</sup> ] <input type="radio"/> Stool pattern and urine output
--	---	--

**EDUCATION AND ADVICE** Repeat discussion of items is based on perceived risk or need

<b>Injury Prevention<sup>1</sup></b> <input type="radio"/> Motorized vehicle safety/Car seat <sup>1</sup> <input type="radio"/> Safe sleep (position, room sharing, avoid bed sharing, crib safety) <sup>1</sup> <input type="radio"/> Firearm safety <sup>1</sup> <input type="radio"/> Pacifier use <sup>1</sup> <input type="radio"/> Hot water <49°C/Bath safety <sup>1</sup> <input type="radio"/> Falls (stairs, change table) <sup>1</sup> <input type="radio"/> Carbon monoxide/Smoke detectors <sup>1</sup> <input type="radio"/> Choking/Safe toys <sup>1</sup>	<b>Behaviour and Family Issues<sup>2</sup></b> <input type="radio"/> Night waking <sup>2</sup> <input type="radio"/> Healthy sleep habits <sup>2</sup> <input type="radio"/> Crying <sup>2</sup> <input type="radio"/> Soothability/Responsiveness <input type="radio"/> Parenting/Bonding <sup>2</sup> <input type="radio"/> Family conflict/Stress <input type="radio"/> Parental fatigue/Postpartum depression <sup>2</sup> <input type="radio"/> Inquire re: difficulty making ends meet or food insecurity <sup>2</sup> <input type="radio"/> High risk infants/Assess home visit need <sup>2</sup> <input type="radio"/> Siblings	<b>Environmental Health<sup>1</sup></b> <input type="radio"/> 2nd hand smoke/E-cigs/Cannabis <sup>1</sup> <input type="radio"/> Sun exposure <sup>1</sup>  <b>Other Issues<sup>1</sup></b> <input type="radio"/> Supervised tummy time while awake <sup>1</sup> <input type="radio"/> No OTC cough/cold medicine <sup>1</sup> <input type="radio"/> Inquiry on complementary/alternative medicine <sup>1</sup> <input type="radio"/> Temperature control and overdressing <input type="radio"/> Fever advice/Thermometers <sup>1</sup>
---	--	---

**DEVELOPMENT<sup>2</sup>** (Inquiry and observation of milestones)

Tasks are set after the time of typical milestone acquisition. Absence of any item suggests consideration for further assessment of development. NB–Correct for age if < 37 weeks gestation

<input type="radio"/> Sucks well on nipple	<input type="radio"/> Sucks well on nipple <input type="radio"/> No parent/caregiver concerns <sup>2</sup>	<input type="radio"/> Focuses gaze <input type="radio"/> Startles to loud noise <input type="radio"/> Calms when comforted <input type="radio"/> Sucks well on nipple <input type="radio"/> No parent/caregiver concerns <sup>2</sup>
--	---	---

**PHYSICAL EXAMINATION<sup>2</sup>** An appropriate age-specific physical examination is recommended at each visit. Evidence-based screening for specific conditions is highlighted.

<input type="radio"/> Fontanelles <sup>2</sup> <input type="radio"/> Skin (jaundice <sup>2</sup> , bruising <sup>2</sup> ) <input type="radio"/> Eyes (red reflex) <sup>2</sup> <input type="radio"/> Ears/TMs–Hearing inquiry/screening <sup>2</sup> <input type="radio"/> Neck/Torticollis <sup>2</sup> <input type="radio"/> Intact palate (inspection/palpation) <sup>2</sup> <input type="radio"/> Tongue mobility if breastfeeding problems <sup>2</sup> <input type="radio"/> Heart/Lungs <input type="radio"/> Abdomen/Umbilicus <sup>2</sup> <input type="radio"/> Femoral pulses <input type="radio"/> Hips (Barlow/Ortolani) <sup>2</sup> <input type="radio"/> Testicles/Genitalia <input type="radio"/> Male urinary stream/Foreskin care <input type="radio"/> Spine (dimple/sinus) <sup>2</sup> /Patency of anus <sup>2</sup> <input type="radio"/> Muscle tone <sup>2</sup>	<input type="radio"/> Fontanelles <sup>2</sup> <input type="radio"/> Skin (jaundice <sup>2</sup> , bruising <sup>2</sup> ) <input type="radio"/> Eyes (red reflex) <sup>2</sup> <input type="radio"/> Ears/TMs–Hearing inquiry/screening <sup>2</sup> <input type="radio"/> Neck/Torticollis <sup>2</sup> <input type="radio"/> Intact palate (inspection/palpation) <sup>2</sup> <input type="radio"/> Tongue mobility if breastfeeding problems <sup>2</sup> <input type="radio"/> Heart/Lungs <input type="radio"/> Abdomen/Umbilicus <sup>2</sup> <input type="radio"/> Femoral pulses <input type="radio"/> Hips (Barlow/Ortolani) <sup>2</sup> <input type="radio"/> Testicles/Genitalia <input type="radio"/> Male urinary stream/Foreskin care <input type="radio"/> Spine (dimple/sinus) <sup>2</sup> <input type="radio"/> Muscle tone <sup>2</sup>	<input type="radio"/> Fontanelles <sup>2</sup> <input type="radio"/> Skin (jaundice <sup>2</sup> , bruising <sup>2</sup> ) <input type="radio"/> Eyes (red reflex) <sup>2</sup> <input type="radio"/> Hearing inquiry/screening <sup>2</sup> <input type="radio"/> Intact palate (inspection/palpation) <sup>2</sup> <input type="radio"/> Tongue mobility if breastfeeding problems <sup>2</sup> <input type="radio"/> Neck/Torticollis <sup>2</sup> <input type="radio"/> Heart/Lungs/Abdomen <input type="radio"/> Hips (Barlow/Ortolani) <sup>2</sup> <input type="radio"/> Muscle tone <sup>2</sup>
---	---	---

**PROBLEMS AND PLANS/CURRENT & NEW REFERRALS<sup>4</sup>** E.g. medical specialist, dietitian, speech, audiology, PT, OT, eyes, dental, social determinants resources

--	--	--

**INVESTIGATIONS / SCREENING<sup>2</sup> AND IMMUNIZATION<sup>3</sup>** Discuss immunization benefits and pain reduction strategies<sup>3</sup> Record Vaccines on Guide V

<input type="radio"/> Newborn screening as per province <input type="radio"/> Hemoglobinopathy screen (if at risk) <sup>2</sup> <input type="radio"/> Universal newborn hearing screening (UNHS) <sup>2</sup> <input type="radio"/> If HBsAg-positive parent/sibling Hep B vaccine #1 <sup>3</sup>	<input type="radio"/> If HBsAg-positive parent/sibling Hep B vaccine #2 <sup>3</sup>
---	--

**SIGNATURE**

x	x	x
---	---	---

Strength of recommendation is based on literature review using the classification: **Good (bold type)**; *Fair (italic type)*; Inconclusive evidence/Consensus (plain type). See literature review table at [www.rourkebabyrecord.ca](#)  
<sup>1</sup>Resources 1: Growth, Nutrition, Injury Prevention, Environment, Other    <sup>2</sup>Resources 2: Family, Behaviour, Development, P/E, Investigations    <sup>3</sup>Resources 3: Immunization    <sup>4</sup>Resources 4: ECD Resources System and Table



NAME: \_\_\_\_\_ Birth Day (d/m/yy): \_\_\_\_/\_\_\_\_/20\_\_ M  F   
 Gestational Age: \_\_\_\_\_ Birth Length: \_\_\_\_\_ cm Birth Weight: \_\_\_\_\_ g  
 Birth Head Circumference: \_\_\_\_\_ cm

Past problems/Risk factors: \_\_\_\_\_  
 Family history: \_\_\_\_\_  
 \_\_\_\_\_  
 \_\_\_\_\_

**2 MONTHS** **4 MONTHS** **6 MONTHS**

DATE OF VISIT \_\_\_\_/\_\_\_\_/20\_\_ DATE OF VISIT \_\_\_\_/\_\_\_\_/20\_\_ DATE OF VISIT \_\_\_\_/\_\_\_\_/20\_\_

**GROWTH<sup>1</sup>** use [WHO growth charts](#). Correct age until 24–36 months if < 37 weeks gestation

Length	Weight	Head Circ.	Length	Weight	Head Circ.	Length	Weight (x2 BW)	Head Circ.
--------	--------	------------	--------	--------	------------	--------	----------------	------------

**PARENT / CAREGIVER CONCERNS**

--	--	--

**NUTRITION<sup>1</sup>** For each  item discussed, indicate “✓” for no concerns, or “X” if concerns

<ul style="list-style-type: none"> <li><input type="radio"/> Breastfeeding (exclusive)<sup>1</sup></li> <li><input type="radio"/> Vitamin D 400 IU/day<sup>1</sup></li> <li><input type="radio"/> Formula feeding/preparation<sup>1</sup> [600–900 mL(20–30 oz) /day<sup>1</sup>]</li> </ul>	<ul style="list-style-type: none"> <li><input type="radio"/> Breastfeeding (exclusive)<sup>1</sup></li> <li><input type="radio"/> Vitamin D 400 IU/day<sup>1</sup></li> <li><input type="radio"/> Formula feeding/preparation<sup>1</sup> [750–1080 mL(25–36 oz) /day<sup>1</sup>]</li> <li><input type="radio"/> Discuss future introduction of solids, with emphasis on iron containing and allergenic foods<sup>1</sup></li> </ul>	<ul style="list-style-type: none"> <li><input type="radio"/> Breastfeeding<sup>1</sup> – introduction of solids<sup>1</sup></li> <li><input type="radio"/> Vitamin D 400 IU/day<sup>1</sup></li> <li><input type="radio"/> Formula feeding/preparation<sup>1</sup> [750–1080 mL(25–36 oz) /day<sup>1</sup>]</li> <li><input type="radio"/> Iron containing foods<sup>1</sup> (iron fortified infant cereals, meat, tofu, legumes, poultry, fish, whole eggs)</li> <li><input type="radio"/> Allergenic foods (especially eggs and peanut products)<sup>1</sup></li> <li><input type="radio"/> Fruits, vegetables, and milk products (yogurt, cheese) to follow</li> <li><input type="radio"/> Avoid juice and food/beverages high in sugar or salt<sup>1</sup></li> <li><input type="radio"/> Choking/Safe food<sup>1</sup> <input type="radio"/> No honey<sup>1</sup> <input type="radio"/> No bottles in bed</li> </ul>
--	---	---

**EDUCATION AND ADVICE** Repeat discussion of items is based on perceived risk or need

<p><b>Injury Prevention<sup>1</sup></b></p> <ul style="list-style-type: none"> <li><input type="radio"/> Motorized vehicle safety/Car seat<sup>1</sup></li> <li><input type="radio"/> Safe sleep (position, room sharing, avoid bed sharing, crib safety)<sup>1</sup></li> <li><input type="radio"/> Poisons<sup>1</sup>; PCC#<sup>1</sup></li> <li><input type="radio"/> Firearm safety<sup>1</sup></li> <li><input type="radio"/> Pacifier use<sup>1</sup></li> <li><input type="radio"/> Hot water &lt;49°C/Bath safety<sup>1</sup></li> <li><input type="radio"/> Electric plugs/Cords</li> <li><input type="radio"/> Falls (stairs, change table, unstable furniture/TV, no walkers)<sup>1</sup></li> <li><input type="radio"/> Carbon monoxide/Smoke detectors<sup>1</sup></li> <li><input type="radio"/> Choking/Safe toys<sup>1</sup></li> </ul>	<p><b>Behaviour and Family Issues<sup>2</sup></b></p> <ul style="list-style-type: none"> <li><input type="radio"/> Night waking<sup>2</sup></li> <li><input type="radio"/> Crying<sup>2</sup></li> <li><input type="radio"/> Parenting/Bonding<sup>2</sup></li> <li><input type="radio"/> Parental fatigue/Postpartum depression<sup>2</sup></li> <li><input type="radio"/> Inquire re: difficulty making ends meet or food insecurity<sup>2</sup></li> <li><input type="radio"/> High risk infants/Assess home visit need<sup>2</sup></li> <li><input type="radio"/> Family healthy active living/Sedentary behaviour/Screen time<sup>2</sup></li> <li><input type="radio"/> Encourage reading<sup>2</sup></li> <li><input type="radio"/> Child care<sup>2</sup>/Return to work</li> <li><input type="radio"/> Siblings</li> </ul>	<p><b>Environmental Health<sup>1</sup></b></p> <ul style="list-style-type: none"> <li><input type="radio"/> 2nd hand smoke/E-cigs/Cannabis<sup>1</sup></li> <li><input type="radio"/> Pesticide exposure<sup>1</sup></li> <li><input type="radio"/> Sun exposure/Sunscreens/Insect repellent<sup>1</sup></li> </ul> <p><b>Other Issues<sup>1</sup></b></p> <ul style="list-style-type: none"> <li><input type="radio"/> Supervised tummy time while awake<sup>1</sup></li> <li><input type="radio"/> Teething<sup>1</sup>/Dental cleaning/Fluoride<sup>1</sup></li> <li><input type="radio"/> No OTC cough/cold medicine<sup>1</sup></li> <li><input type="radio"/> Complementary/alternative medicine<sup>1</sup></li> <li><input type="radio"/> Temperature control and overdressing</li> <li><input type="radio"/> Fever advice/Thermometers<sup>1</sup></li> </ul>
--	---	--

**DEVELOPMENT<sup>2</sup>** (Inquiry and observation of milestones)

Tasks are set after the time of typical milestone acquisition. Absence of any item suggests consideration for further assessment of development. NB—Correct for age if < 37 weeks gestation

<ul style="list-style-type: none"> <li><input type="radio"/> Follows movement with eyes</li> <li><input type="radio"/> Coos – throaty, gurgling sounds</li> <li><input type="radio"/> Lifts head up while lying on tummy</li> <li><input type="radio"/> Can be comforted &amp; calmed by touching/rocking</li> <li><input type="radio"/> Sequences 2 or more sucks before swallowing/breathing</li> <li><input type="radio"/> Smiles responsively</li> <li><input type="radio"/> No parent/caregiver concerns<sup>2</sup></li> </ul>	<ul style="list-style-type: none"> <li><input type="radio"/> Follows a moving toy or person with eyes</li> <li><input type="radio"/> Responds to people with excitement (leg movement/panting/vocalizing)</li> <li><input type="radio"/> Holds head steady when supported at the chest or waist in a sitting position</li> <li><input type="radio"/> Holds an object briefly when placed in hand</li> <li><input type="radio"/> Laughs/smiles responsively</li> <li><input type="radio"/> No parent/caregiver concerns<sup>2</sup></li> </ul>	<ul style="list-style-type: none"> <li><input type="radio"/> Turns head toward sounds</li> <li><input type="radio"/> Makes sounds while you talk to him/her</li> <li><input type="radio"/> Vocalizes pleasure and displeasure</li> <li><input type="radio"/> Rolls from back to side</li> <li><input type="radio"/> Sits with support (e.g. pillows)</li> <li><input type="radio"/> Reaches/grasps objects with both hands equally</li> <li><input type="radio"/> No persistent closed/fisted hands</li> <li><input type="radio"/> No parent/caregiver concerns<sup>2</sup></li> </ul>
--	---	--

**PHYSICAL EXAMINATION<sup>2</sup>** An appropriate age-specific physical examination is recommended at each visit. Evidence-based screening for specific conditions is highlighted.

<ul style="list-style-type: none"> <li><input type="radio"/> Fontanelles<sup>2</sup></li> <li><input type="radio"/> Eyes (red reflex)<sup>2</sup></li> <li><input type="radio"/> Neck/Torticollis<sup>2</sup></li> <li><input type="radio"/> Heart/Lungs/Abdomen</li> <li><input type="radio"/> Hips (Barlow/Ortolani)<sup>2</sup></li> <li><input type="radio"/> Muscle tone<sup>2</sup></li> </ul>	<ul style="list-style-type: none"> <li><input type="radio"/> Skin (jaundice<sup>2</sup>, bruising<sup>2</sup>)</li> <li><input type="radio"/> Hearing inquiry/screening<sup>2</sup></li> </ul>	<ul style="list-style-type: none"> <li><input type="radio"/> Anterior fontanelle<sup>2</sup></li> <li><input type="radio"/> Eyes (red reflex)<sup>2</sup></li> <li><input type="radio"/> Neck/Torticollis<sup>2</sup></li> <li><input type="radio"/> Heart/Lungs/Abdomen</li> <li><input type="radio"/> Hips (limited hip abd'n)<sup>2</sup></li> <li><input type="radio"/> Muscle tone<sup>2</sup></li> </ul>	<ul style="list-style-type: none"> <li><input type="radio"/> Bruising<sup>2</sup></li> <li><input type="radio"/> Hearing inquiry/screening<sup>2</sup></li> <li><input type="radio"/> Anterior fontanelle<sup>2</sup></li> <li><input type="radio"/> Bruising<sup>2</sup></li> <li><input type="radio"/> Eyes (red reflex)<sup>2</sup></li> <li><input type="radio"/> Hearing inquiry/screening<sup>2</sup></li> <li><input type="radio"/> Corneal light reflex/Cover-uncover test &amp; inquiry<sup>2</sup></li> <li><input type="radio"/> Teeth/Caries risk assessment<sup>2</sup></li> <li><input type="radio"/> Heart/Lungs/Abdomen</li> <li><input type="radio"/> Hips (limited hip abd'n)<sup>2</sup></li> <li><input type="radio"/> Muscle tone<sup>2</sup>/No head lag</li> </ul>
--	--	--	---

**PROBLEMS AND PLANS/CURRENT & NEW REFERRALS<sup>4</sup>** E.g. medical specialist, dietitian, speech, audiology, PT, OT, eyes, dental, social determinants resources

--	--	--

**INVESTIGATIONS / SCREENING<sup>2</sup> and IMMUNIZATION<sup>3</sup>** Discuss immunization benefits and pain reduction strategies<sup>3</sup> Record Vaccines on Guide V

	<ul style="list-style-type: none"> <li><input type="radio"/> Anemia screening (If at risk)<sup>2</sup></li> <li><input type="radio"/> Inquire about risk factors for TB<sup>2</sup></li> <li><input type="radio"/> If HBsAg-positive parent/sibling Hep B vaccine #3<sup>3</sup></li> </ul>
--	---

**SIGNATURE**

x \_\_\_\_\_ x \_\_\_\_\_ x \_\_\_\_\_

Strength of recommendation is based on literature review using the classification: **Good (bold type)**; *Fair (italic type)*; Inconclusive evidence/Consensus (plain type). See literature review table at [www.rourkebabyrecord.ca](#)  
<sup>1</sup>Resources 1: Growth, Nutrition, Injury Prevention, Environment, Other <sup>2</sup>Resources 2: Family, Behaviour, Development, P/E, Investigations <sup>3</sup>Resources 3: Immunization <sup>4</sup>Resources 4: ECD Resources System and Table



NAME: \_\_\_\_\_ Birth Day (d/m/yy): \_\_\_\_/\_\_\_\_/20\_\_ M  F   
 Gestational Age: \_\_\_\_\_ Birth Length: \_\_\_\_\_ cm Birth Weight: \_\_\_\_\_ g  
 Birth Head Circumference: \_\_\_\_\_ cm

Past problems/Risk factors: \_\_\_\_\_ Family history: \_\_\_\_\_  
 \_\_\_\_\_  
 \_\_\_\_\_

**9 MONTHS (OPTIONAL) | 12–13 MONTHS | 15 MONTHS (OPTIONAL)**

DATE OF VISIT \_\_\_\_/\_\_\_\_/20\_\_ DATE OF VISIT \_\_\_\_/\_\_\_\_/20\_\_ DATE OF VISIT \_\_\_\_/\_\_\_\_/20\_\_

**GROWTH<sup>1</sup>** use [WHO growth charts](#). Correct age until 24–36 months if < 37 weeks gestation

Length	Weight	Head Circ.	Length	Weight (x3 BW)	Head Circ. (avg 47 cm)	Length	Weight	Head Circ.
--------	--------	------------	--------	----------------	------------------------	--------	--------	------------

**PARENT / CAREGIVER CONCERNS**

--	--	--

**NUTRITION<sup>1</sup>** For each  item discussed, indicate “✓” for no concerns, or “X” if concerns

<ul style="list-style-type: none"> <li><input type="checkbox"/> Breastfeeding<sup>1</sup>/Vitamin D 400 IU/day<sup>1</sup></li> <li><input type="checkbox"/> Formula feeding/preparation<sup>1</sup> [720–960 mLs(24–32 oz) /day<sup>1</sup>]</li> <li><input type="checkbox"/> Iron containing foods<sup>1</sup>, Allergenic foods<sup>1</sup>, fruits, vegetables</li> <li><input type="checkbox"/> Avoid juice and food/beverages high in sugar or salt<sup>1</sup></li> <li><input type="checkbox"/> Cow's milk products (e.g. yogurt, cheese, homogenized milk)</li> <li><input type="checkbox"/> Choking/Safe foods<sup>1</sup></li> <li><input type="checkbox"/> Encourage change from bottle to cup <input type="checkbox"/> No bottles in bed</li> <li><input type="checkbox"/> Eats a variety of textures <input type="checkbox"/> Independent/self-feeding<sup>1</sup></li> <li><input type="checkbox"/> No honey<sup>1</sup></li> </ul>	<ul style="list-style-type: none"> <li><input type="checkbox"/> Breastfeeding<sup>1</sup>/Vitamin D 400 IU/day<sup>1</sup></li> <li><input type="checkbox"/> Homogenized milk [500–750 mLs(16–24 oz) /day<sup>1</sup>]</li> <li><input type="checkbox"/> Avoid juice and food/beverages high in sugar or salt<sup>1</sup></li> <li><input type="checkbox"/> Choking/Safe foods<sup>1</sup></li> <li><input type="checkbox"/> Promote open cup instead of bottle</li> <li><input type="checkbox"/> No bottles in bed</li> <li><input type="checkbox"/> Independent/self-feeding<sup>1</sup></li> <li><input type="checkbox"/> Appetite reduced</li> <li><input type="checkbox"/> Eats family foods with a variety of textures.</li> <li><input type="checkbox"/> Inquire re: vegetarian diets<sup>1</sup></li> </ul>	<ul style="list-style-type: none"> <li><input type="checkbox"/> Breastfeeding<sup>1</sup>/Vitamin D 400 IU/day<sup>1</sup></li> <li><input type="checkbox"/> Homogenized milk [500–750 mLs(16–24 oz) /day<sup>1</sup>]</li> <li><input type="checkbox"/> Avoid juice and food/beverages high in sugar or salt<sup>1</sup></li> <li><input type="checkbox"/> Choking/Safe foods<sup>1</sup></li> <li><input type="checkbox"/> Promote open cup instead of bottle</li> <li><input type="checkbox"/> No bottles in bed</li> <li><input type="checkbox"/> Independent/self-feeding<sup>1</sup></li> <li><input type="checkbox"/> Inquire re: vegetarian diets<sup>1</sup></li> </ul>
---	---	--

**EDUCATION AND ADVICE** Repeat discussion of items is based on perceived risk or need

<p><b>Injury Prevention<sup>1</sup></b></p> <ul style="list-style-type: none"> <li><input type="checkbox"/> Motorized vehicle safety/Car seat<sup>1</sup></li> <li><input type="checkbox"/> Safe sleep (9 mo: position, avoid bed sharing, crib safety)<sup>1</sup></li> <li><input type="checkbox"/> Poisons<sup>1</sup>; PCC#<sup>1</sup></li> <li><input type="checkbox"/> Firearm safety<sup>1</sup></li> <li><input type="checkbox"/> Pacifier use<sup>1</sup></li> <li><input type="checkbox"/> Bath safety<sup>1</sup>/Burns<sup>1</sup></li> <li><input type="checkbox"/> Carbon monoxide/Smoke detectors<sup>1</sup></li> </ul> <p>Childproofing, including:</p> <ul style="list-style-type: none"> <li><input type="checkbox"/> Falls (stairs, change table, unstable furniture/TV, no walkers)<sup>1</sup></li> <li><input type="checkbox"/> Electric plugs/Cords <input type="checkbox"/> Choking/Safe toys<sup>1</sup></li> </ul>	<p><b>Behaviour and Family Issues<sup>2</sup></b></p> <ul style="list-style-type: none"> <li><input type="checkbox"/> Night waking<sup>2</sup> <input type="checkbox"/> Healthy sleep habits<sup>2</sup></li> <li><input type="checkbox"/> Crying<sup>2</sup> <input type="checkbox"/> Soothability/Responsiveness</li> <li><input type="checkbox"/> Parenting<sup>2</sup> <input type="checkbox"/> Family conflict/Stress</li> <li><input type="checkbox"/> Parental fatigue/Depression<sup>2</sup></li> <li><input type="checkbox"/> Inquire re: difficulty making ends meet or food insecurity<sup>2</sup></li> <li><input type="checkbox"/> High risk infants/Assess home visit need<sup>2</sup></li> <li><input type="checkbox"/> Family healthy active living/Sedentary behaviour/Screen time<sup>2</sup></li> <li><input type="checkbox"/> Encourage reading<sup>2</sup></li> <li><input type="checkbox"/> Child care<sup>2</sup>/Return to work</li> <li><input type="checkbox"/> Siblings</li> </ul>	<p><b>Environmental Health<sup>1</sup></b></p> <ul style="list-style-type: none"> <li><input type="checkbox"/> 2nd hand smoke/E-cigs/Cannabis<sup>1</sup></li> <li><input type="checkbox"/> Pesticide exposure<sup>1</sup></li> <li><input type="checkbox"/> Sun exposure/Sunscreens/Insect repellent<sup>1</sup></li> </ul> <p><b>Other Issues<sup>1</sup></b></p> <ul style="list-style-type: none"> <li><input type="checkbox"/> Teething<sup>1</sup>/Dental cleaning/Fluoride/Dentist<sup>1</sup></li> <li><input type="checkbox"/> No OTC cough/cold medicine<sup>1</sup></li> <li><input type="checkbox"/> Complementary/alternative medicine<sup>1</sup></li> <li><input type="checkbox"/> Fever advice/Thermometers<sup>1</sup></li> <li><input type="checkbox"/> Footwear<sup>1</sup></li> </ul>
--	---	---

**DEVELOPMENT<sup>2</sup>** (Inquiry and observation of milestones)

Tasks are set after the time of typical milestone acquisition. Absence of any item suggests consideration for further assessment of development. NB–Correct for age if < 37 weeks gestation

<ul style="list-style-type: none"> <li><input type="checkbox"/> Looks for an object seen hidden</li> <li><input type="checkbox"/> Cries or shouts for attention</li> <li><input type="checkbox"/> Babbles a series of different sounds (e.g. baba, duhduh)</li> <li><input type="checkbox"/> Responds differently to different people</li> <li><input type="checkbox"/> Makes sounds/gestures to get attention or help</li> <li><input type="checkbox"/> Stands with support when helped into standing position</li> <li><input type="checkbox"/> Sits without support <input type="checkbox"/> Uses both hands equally</li> <li><input type="checkbox"/> Opposes thumb and fingers when grasps objects and finger foods</li> <li><input type="checkbox"/> Plays social games with you (e.g. nose touching, peek-a-boo)</li> <li><input type="checkbox"/> No parent/caregiver concerns<sup>2</sup></li> </ul>	<ul style="list-style-type: none"> <li><input type="checkbox"/> Responds to own name</li> <li><input type="checkbox"/> Understands simple requests, (e.g. Where is the ball?)</li> <li><input type="checkbox"/> Makes at least 1 consonant/vowel combination</li> <li><input type="checkbox"/> Says 3 or more words (do not have to be clear)</li> <li><input type="checkbox"/> Crawls or 'bum' shuffles <input type="checkbox"/> Pulls to stand/walks holding on</li> <li><input type="checkbox"/> Has pincer grasp to pick up and eat finger foods</li> <li><input type="checkbox"/> Uses both hands equally</li> <li><input type="checkbox"/> Shows distress when separated from parent/caregiver</li> <li><input type="checkbox"/> Follows your gaze to jointly reference an object</li> <li><input type="checkbox"/> No parent/caregiver concerns<sup>2</sup></li> </ul>	<ul style="list-style-type: none"> <li><input type="checkbox"/> Says 5 or more words (words do not have to be clear)</li> <li><input type="checkbox"/> Walks sideways holding onto furniture</li> <li><input type="checkbox"/> Shows fear of strange people/places</li> <li><input type="checkbox"/> Crawls up a few stairs/steps</li> <li><input type="checkbox"/> Tries to squat to pick up toys from the floor</li> <li><input type="checkbox"/> No parent/caregiver concerns<sup>2</sup></li> </ul>
---	---	---

**PHYSICAL EXAMINATION<sup>2</sup>** An appropriate age-specific physical examination is recommended at each visit. Evidence-based screening for specific conditions is highlighted.

<ul style="list-style-type: none"> <li><input type="checkbox"/> Anterior fontanelle<sup>2</sup></li> <li><input type="checkbox"/> Eyes (red reflex)<sup>2</sup> <input type="checkbox"/> Hearing inquiry/screening<sup>2</sup></li> <li><input type="checkbox"/> Corneal light reflex/Cover-uncover test &amp; inquiry<sup>2</sup></li> <li><input type="checkbox"/> Teeth/Caries risk assessment<sup>2</sup></li> <li><input type="checkbox"/> Heart/Lungs/Abdomen <input type="checkbox"/> Hips (limited hip abd'n)<sup>2</sup></li> <li><input type="checkbox"/> Muscle tone<sup>2</sup></li> </ul>	<ul style="list-style-type: none"> <li><input type="checkbox"/> Anterior fontanelle<sup>2</sup></li> <li><input type="checkbox"/> Eyes (red reflex)<sup>2</sup> <input type="checkbox"/> Hearing inquiry/screening<sup>2</sup></li> <li><input type="checkbox"/> Corneal light reflex/Cover-uncover test &amp; inquiry<sup>2</sup></li> <li><input type="checkbox"/> Tonsil size/Sleep-disordered breathing<sup>2</sup></li> <li><input type="checkbox"/> Teeth/Caries risk assessment<sup>2</sup></li> <li><input type="checkbox"/> Heart/Lungs/Abdomen <input type="checkbox"/> Hips (limited hip abd'n)<sup>2</sup></li> <li><input type="checkbox"/> Muscle tone<sup>2</sup></li> </ul>	<ul style="list-style-type: none"> <li><input type="checkbox"/> Anterior fontanelle<sup>2</sup></li> <li><input type="checkbox"/> Eyes (red reflex)<sup>2</sup> <input type="checkbox"/> Hearing inquiry/screening<sup>2</sup></li> <li><input type="checkbox"/> Corneal light reflex/Cover-uncover test &amp; inquiry<sup>2</sup></li> <li><input type="checkbox"/> Tonsil size/Sleep-disordered breathing<sup>2</sup></li> <li><input type="checkbox"/> Teeth/Caries risk assessment<sup>2</sup></li> <li><input type="checkbox"/> Heart/Lungs/Abdomen <input type="checkbox"/> Hips (limited hip abd'n)<sup>2</sup></li> </ul>
--	---	---

**PROBLEMS AND PLANS/CURRENT & NEW REFERRALS<sup>4</sup>** E.g. medical specialist, dietitian, speech, audiology, PT, OT, eyes, dental, social determinants resources

--	--	--

**INVESTIGATIONS / SCREENING<sup>2</sup> AND IMMUNIZATION<sup>3</sup>** Discuss immunization benefits and pain reduction strategies<sup>3</sup> Record Vaccines on Guide V

If HBsAg positive mother check HBV antibodies and HBsAg<sup>3</sup> (at 9 or 12 months)  Anemia screening (If at risk)<sup>2</sup>  Blood lead if at risk<sup>1</sup>

**SIGNATURE**

x \_\_\_\_\_ x \_\_\_\_\_ x \_\_\_\_\_

Strength of recommendation is based on literature review using the classification: **Good (bold type)**; Fair (italic type); Inconclusive evidence/Consensus (plain type). See literature review table at www.rourkebabyrecord.ca  
<sup>1</sup>Resources 1: Growth, Nutrition, Injury Prevention, Environment, Other <sup>2</sup>Resources 2: Family, Behaviour, Development, P/E, Investigations <sup>3</sup>Resources 3: Immunization <sup>4</sup>Resources 4: ECD Resources System and Table



NAME: \_\_\_\_\_ Birth Day (d/m/yy): \_\_\_\_/\_\_\_\_/20\_\_ M  F

Gestational Age: \_\_\_\_\_ Birth Length: \_\_\_\_\_ cm Birth Weight: \_\_\_\_\_ g

Birth Head Circumference: \_\_\_\_\_ cm

Past problems/Risk factors:	Family history:

18 MONTHS	2–3 YEARS	4–5 YEARS
-----------	-----------	-----------

DATE OF VISIT ____/____/20__	DATE OF VISIT ____/____/20__	DATE OF VISIT ____/____/20__
------------------------------	------------------------------	------------------------------

**GROWTH<sup>1</sup>** use [WHO growth charts](#). Correct age until 24–36 months if < 37 weeks gestation

Length	Weight	Head Circ.	Height	Weight	Head Circ. if prior abN	BMI	Height	Weight	BMI
--------	--------	------------	--------	--------	-------------------------	-----	--------	--------	-----

**PARENT / CAREGIVER CONCERNS**

--	--	--

**NUTRITION<sup>1</sup>** For each  item discussed, indicate “✓” for no concerns, or “X” if concerns

<input type="radio"/> Breastfeeding <sup>1</sup> /Vitamin D 400 IU/day <sup>1</sup> <input type="radio"/> Homogenized milk [500–750 mLs(16–24 oz) /day <sup>1</sup> ] <input type="radio"/> Avoid juice and food/beverages high in sugar or salt <sup>1</sup> <input type="radio"/> No bottles <input type="radio"/> Independent/self-feeding <sup>1</sup> <input type="radio"/> Inquire re: vegetarian diets <sup>1</sup>	<input type="radio"/> Breastfeeding <sup>1</sup> /Vitamin D 400 IU/day <sup>1</sup> <input type="radio"/> Skim, 1% or 2% milk [~ 500 mLs(16 oz) /day <sup>1</sup> ] <input type="radio"/> Avoid juice and food/beverages high in sugar or salt <sup>1</sup> <input type="radio"/> Gradual transition to lower fat diet <sup>1</sup> <input type="radio"/> Canada's Food Guide <sup>1</sup> <input type="radio"/> Inquire re: vegetarian diets <sup>1</sup>	<input type="radio"/> Skim, 1% or 2% milk [~ 500 mLs(16 oz) /day <sup>1</sup> ] <input type="radio"/> Avoid juice and food/beverages high in sugar or salt <sup>1</sup> <input type="radio"/> Canada's Food Guide <sup>1</sup> <input type="radio"/> Inquire re: vegetarian diets <sup>1</sup>
---	---	---

**EDUCATION AND ADVICE** Repeat discussion of items is based on perceived risk or need

<u>Injury Prevention<sup>1</sup></u> <input type="radio"/> Motorized vehicle safety/Car seat (child/booster) <sup>1</sup> <input type="radio"/> Poisons <sup>1</sup> ; PCC# <sup>1</sup> <input type="radio"/> Bath safety <sup>1</sup> /Burns <sup>1</sup> <input type="radio"/> Choking/Safe toys <sup>1</sup> <input type="radio"/> Wean from pacifier <sup>1</sup> <input type="radio"/> Falls (stairs, change table, unstable furniture/TV) <sup>1</sup>	<u>Injury Prevention<sup>1</sup></u> <input type="radio"/> Motorized vehicle safety/Car seat (child/booster) <sup>1</sup> <input type="radio"/> Carbon monoxide/smoke detectors <sup>1</sup> / Burns <sup>1</sup> /Matches <input type="radio"/> Bike helmets <sup>1</sup> <input type="radio"/> Firearm safety <sup>1</sup> <input type="radio"/> Falls (stairs, unstable furniture/TV, trampolines) <sup>1</sup> <input type="radio"/> Poisons <sup>1</sup> ; PCC# <sup>1</sup> <input type="radio"/> Water safety <sup>1</sup> <input type="radio"/> No pacifiers <sup>1</sup>
<u>Behaviour<sup>2</sup></u> <input type="radio"/> Parent/child interaction <input type="radio"/> Discipline/Parenting skills programs <sup>2</sup> <input type="radio"/> High-risk children <sup>2</sup> <input type="radio"/> Parental fatigue/Depression <sup>2</sup> <input type="radio"/> Family conflict/Stress <input type="radio"/> Siblings	<u>Behaviour<sup>2</sup></u> <input type="radio"/> Parent/child interaction <input type="radio"/> Discipline/Parenting skills programs <sup>2</sup> <input type="radio"/> High-risk children <sup>2</sup> <input type="radio"/> Parental fatigue/Depression <sup>2</sup> <input type="radio"/> Family conflict/Stress <input type="radio"/> Siblings
<u>Family<sup>2</sup></u> <input type="radio"/> High-risk children <sup>2</sup> <input type="radio"/> Encourage reading <sup>2</sup> <input type="radio"/> Parental fatigue/Stress/Depression <sup>2</sup> <input type="radio"/> Inquire re: difficulty making ends meet or food insecurity <sup>2</sup> <input type="radio"/> Family healthy active living/Sedentary behaviour/Screen time <sup>2</sup> <input type="radio"/> Socializing/Peer play opportunities	<u>Family<sup>2</sup></u> <input type="radio"/> Inquire re: difficulty making ends meet or food insecurity <sup>2</sup> <input type="radio"/> Healthy sleep habits <sup>2</sup> <input type="radio"/> Family healthy active living/Sedentary behaviour/Screen time <sup>2</sup> <input type="radio"/> Encourage reading <sup>2</sup> <input type="radio"/> Assess child care/Preschool needs/School readiness <sup>2</sup> <input type="radio"/> Socializing opportunities
<u>Environment Health<sup>1</sup></u> <input type="radio"/> 2nd hand smoke/E-cigs/Cannabis <sup>1</sup> <input type="radio"/> Pesticide exposure <sup>1</sup> <input type="radio"/> Sun exposure/Sunscreens/Insect repellent <sup>1</sup>	<u>Environment Health<sup>1</sup></u> <input type="radio"/> 2nd hand smoke/E-cigs/Cannabis <sup>1</sup> <input type="radio"/> Pesticide exposure <sup>1</sup> <input type="radio"/> Sun exposure/Sunscreens/Insect repellent <sup>1</sup>
<u>Other<sup>1</sup></u> <input type="radio"/> Dental care/Dentist <sup>1</sup> <input type="radio"/> Toilet learning <sup>2</sup>	<u>Other<sup>1</sup></u> <input type="radio"/> Dental cleaning/Fluoride/Dentist <sup>1</sup> <input type="radio"/> Complementary/alternative medicine <sup>1</sup> <input type="radio"/> No OTC cough/cold medicine <sup>1</sup> <input type="radio"/> Toilet learning <sup>2</sup>

**DEVELOPMENT<sup>2</sup>** (Inquiry and observation of milestones)  
Tasks are set after the time of typical milestone acquisition. Absence of any item suggests consideration for further assessment of development. NB—Correct for age if < 37 weeks gestation

<u>Social/Emotional<sup>2</sup></u> <input type="radio"/> Interested in other children <input type="radio"/> Usually easy to soothe <input type="radio"/> Child's behaviour is usually manageable <input type="radio"/> Comes for comfort when distressed <u>Communication Skills<sup>2</sup></u> <input type="radio"/> Points to several different body parts <input type="radio"/> Tries to get your attention to show you something <input type="radio"/> Turns/responds when name is called <input type="radio"/> Points to what he/she wants <input type="radio"/> Looks for toy when asked or pointed in direction <input type="radio"/> Imitates speech sounds and gestures <input type="radio"/> Says 15 or more words (words do not have to be clear) <input type="radio"/> Produces 4 consonants, (e.g. B D G H N W) <u>Motor Skills</u> <input type="radio"/> Feeds self with spoon with little spilling <input type="radio"/> Walks alone <u>Adaptive Skills</u> <input type="radio"/> Removes hat/socks without help <input type="radio"/> No parent/caregiver concerns <sup>2</sup>	<u>2 years<sup>2</sup></u> <input type="radio"/> Combines 2 or more words <input type="radio"/> Understands 1 and 2 step directions <input type="radio"/> Walks backward 2 steps without support <input type="radio"/> Tries to run <input type="radio"/> Puts objects into small container <input type="radio"/> Uses toys for pretend play (e.g. give doll a drink) <input type="radio"/> Continues to develop new skills <input type="radio"/> No parent/caregiver concerns <sup>2</sup>	<u>3 years</u> <input type="radio"/> Understands 2 and 3 step directions (e.g. "Pick up your hat and shoes and put them in the closet.") <input type="radio"/> Uses sentences with 5 or more words <input type="radio"/> Walks up stairs using handrail <input type="radio"/> Twists lids off jars or turns knobs <input type="radio"/> Shares some of the time <input type="radio"/> Plays make-believe games with actions and words (e.g. pretending to cook a meal, fix a car) <input type="radio"/> Turns pages one at a time <input type="radio"/> Listens to music or stories for 5–10 minutes <input type="radio"/> No parent/caregiver concerns <sup>2</sup>	<u>4 years</u> <input type="radio"/> Understands 3-part directions <input type="radio"/> Asks and answers lots of questions (e.g. "What are you doing?") <input type="radio"/> Walks up/down stairs alternating feet <input type="radio"/> Undoes buttons and zippers <input type="radio"/> Tries to comfort someone who is upset <input type="radio"/> No parent/caregiver concerns <sup>2</sup>	<u>5 years</u> <input type="radio"/> Counts out loud or on fingers to answer "How many are there?" <input type="radio"/> Speaks clearly in adult-like sentences most of the time <input type="radio"/> Throws and catches a ball <input type="radio"/> Hops on 1 foot several times <input type="radio"/> Dresses and undresses with little help <input type="radio"/> Cooperates with adult requests most of the time <input type="radio"/> Retells the sequence of a story <input type="radio"/> Separates easily from parent/ Caregiver <input type="radio"/> No parent/caregiver concerns <sup>2</sup>
--	---	---	---	---

**PHYSICAL EXAMINATION<sup>2</sup>** An appropriate age-specific physical examination is recommended at each visit. Evidence-based screening for specific conditions is highlighted.

<input type="radio"/> Anterior fontanelle closed <sup>2</sup> <input type="radio"/> Eyes (red reflex) <sup>2</sup> <input type="radio"/> Corneal light reflex/Cover-uncover test & inquiry <sup>2</sup> <input type="radio"/> Hearing inquiry <input type="radio"/> Teeth/Caries Risk <sup>2</sup> <input type="radio"/> Tonsil size/Sleep-disordered breathing <sup>2</sup> <input type="radio"/> Heart/Lungs/Abdomen	<input type="radio"/> Blood pressure if at risk (3+yrs) <sup>2</sup> <input type="radio"/> Teeth/Caries Risk <sup>2</sup> <input type="radio"/> Eyes (red reflex)/Visual acuity <sup>2</sup> <input type="radio"/> Hearing inquiry <input type="radio"/> Corneal light reflex/Cover-uncover test & inquiry <sup>2</sup> <input type="radio"/> Tonsil size/Sleep-disordered breathing <sup>2</sup> <input type="radio"/> Heart/Lungs/Abdomen	<input type="radio"/> Blood pressure if at risk <sup>2</sup> <input type="radio"/> Teeth/Caries Risk <sup>2</sup> <input type="radio"/> Eyes (red reflex)/Visual acuity <sup>2</sup> <input type="radio"/> Hearing inquiry <input type="radio"/> Corneal light reflex/Cover-uncover test & inquiry <sup>2</sup> <input type="radio"/> Tonsil size/Sleep-disordered breathing <sup>2</sup> <input type="radio"/> Heart/Lungs/Abdomen
---	--	--

**PROBLEMS AND PLANS/CURRENT & NEW REFERRALS<sup>4</sup>** E.g. medical specialist, dietitian, speech, audiology, PT, OT, eyes, dental, social determinants resources

--	--	--

**INVESTIGATIONS / SCREENING<sup>2</sup> AND IMMUNIZATION<sup>3</sup>** Discuss immunization benefits and pain reduction strategies<sup>3</sup> Record Vaccines on Guide V

Anemia screening (If at risk)<sup>2</sup>       Blood lead if at risk<sup>1</sup>

**SIGNATURE**

x _____	x _____	x _____
---------	---------	---------

Strength of recommendation is based on literature review using the classification: **Good (bold type)**; *Fair (italic type)*; Inconclusive evidence/Consensus (plain type). See literature review table at [www.rourkebabyrecord.ca](#)  
<sup>1</sup>Resources 1: Growth, Nutrition, Injury Prevention, Environment, Other    <sup>2</sup>Resources 2: Family, Behaviour, Development, P/E, Investigations    <sup>3</sup>Resources 3: Immunization    <sup>4</sup>Resources 4: ECD Resources System and Table



**Rourke Baby Record:**  
Evidence-Based Infant/Child Health Maintenance

www.rourkebabyrecord.ca | See [RBR parent web portal](#) for corresponding parent resources

©2020 Drs. L Rourke, D Leduc and J Rourke. Revised Jan 22, 2020

For additional information, refer to the [National Advisory Committee on Immunization](#) website.

Provincial guidelines vary and are available at the [Public Health Agency of Canada \(PHAC\)](#).



**GUIDE V: Immunization** (National)

[Canadian Immunization Guide](#)  
as per NACI Recommendations  
(as of September 2019)

NAME: \_\_\_\_\_ Birth Day (d/m/yy): \_\_\_\_/\_\_\_\_/20\_\_ M  F

VACCINE	NACI RECOMMENDATIONS	DATE GIVEN	INJECTION SITE	LOT NUMBER	EXPIRY DATE	INITIALS	COMMENTS
Rotavirus <sup>3</sup> 2 or 3 doses # doses varies with manufacturer	dose #1 (6 weeks–14 weeks+6 days)						
	dose #2						
	± dose #3 (by 8 months/0 days)						
DTaP/IPV <sup>3</sup> Hib <sup>3</sup> 4 doses (2, 4, 6, 18 months)	dose #1 (2 months)						
	dose #2 (4 months)						
	dose #3 (6 months)						
	dose #4 (18 months)						
Pneu-C-13 <sup>3</sup> 3 or 4 doses (2, 4, ±6, 12–15 months)	dose #1 (2 months)						
	dose #2 (4 months)						
	±dose #3 (6 months)						
	dose #4 (12–15 months)						
Men-Conjugate <sup>3</sup> MCV-C: 1 dose at 12 months MCV-C or MCV-4: 1 dose at 12 years or during adolescence If at increased risk: - MCV-C: 3 doses at 2, 4 & 12 months - MCV-4: at 2 years or older - 4CMenB: at 2 months or older	MCV-C: 2 doses at 2 and 4 months only if at increased risk ± dose #1 (2 months) ± dose #2 (4 months)						
	MCV-C: 1 dose at 12 months						
	MCV-C or MCV-4: 1 dose at 12 years or during adolescence						
Hepatitis B <sup>3</sup> 3 doses in infancy OR 2–3 doses preteen/teen Can be combined with Hep A vaccine	dose #1						
	dose #2						
	± dose #3						
MMR or MMRV <sup>3</sup> 2 doses (12 months, 18 months OR 4 years)	dose #1 (12 months)						
	dose #2 (18 months OR 4 years)						
Varicella <sup>3</sup> 2 doses (12 months–12 years – MMRV or univalent) OR 2 doses (>13 years–univalent)	dose #1						
	dose #2						
DTaP/IPV <sup>3</sup>	1 dose (4–6 years)						
dTap <sup>3</sup>	1 dose (14–16 years)						
Influenza <sup>3</sup> 1 dose annually (6–59 months and high risk > 5 years) First yr only for < 9 years – give 2 doses 1 month apart							
HPV Starting at 9 years of age, as per provincial/territorial guidelines	dose #1						
	dose #2						
	±dose #3						
Other							

**Disclaimer:** Given the constantly evolving nature of evidence and changing recommendations, the Rourke Baby Record is meant to be used as a guide only.

<sup>3</sup>Resources 3: Immunization

Financial support has been provided by the Government of Ontario. For fair use authorization, see [www.rourkebabyrecord.ca](http://www.rourkebabyrecord.ca)



## GROWTH

- **Important:** Corrected age should be used at least until 24 to 36 months of age for premature infants born at <37 weeks gestation.
- **Measuring growth:** The growth of all term infants, both breastfed and non-breastfed, and preschoolers should be evaluated using the 2014 Canadian growth charts from the WHO Child Growth Standards (birth to 5 years) with measurement of recumbent length (birth to 2–3 years) or standing height (≥ 2 years), weight, head circumference (birth to 2 years), and calculation of BMI (2–5 years).

[WHO Growth Charts Adapted for Canada with BMI tables and BMI calculator \(DC\)](#)

[Growth Monitoring \(CTFPHC\)](#) [Optimal growth monitoring \(CPS\)](#)

## NUTRITION

**Nutrition for healthy term infants (NHTI):** [0–6 months](#) [6–24 months](#) [NutriSTEP®](#)  
[Overview NHTI 0–6 months \(CPS\)](#) [2019 Nutrition Guidelines \(ODPH\)](#) [Dietitians of Canada](#)

- **Breastfeeding: Exclusive breastfeeding** is recommended for the first six months of life for healthy term infants. Introduction of solids should be led by the infant's signs of readiness—a few weeks before to just after 6 months. Breast milk is the optimal food for infants, and breastfeeding (with complementary foods) may continue for up to two years and beyond unless contraindicated. Breastfeeding may reduce gastrointestinal and respiratory infections and helps to protect against SIDS. Maternal support (both antepartum and postpartum) increases breastfeeding and prolongs its duration. Early and frequent mother-infant contact, rooming in, and banning handouts of free infant formula increase breastfeeding rates.
  - Breastmilk storage: [2019 Nutrition Guidelines \(ODPH\) page 8](#)
  - [Ankyloglossia and breastfeeding \(CPS\)](#)
  - Maternal medications when breastfeeding: [Drugs and Lactation Database \(TOXNET\)](#)
  - Weaning: [Weaning from the breast \(CPS\)](#)
- **Vitamin D supplementation** of 400 IU/day (800 IU/day in high-risk infants) is recommended for infants/children for as long as they are breastfed. Breastfeeding mothers should consume a standard multivitamin/mineral supplement that contains vitamin D (400 IU/day).  
[Vitamin D supplementation \(CPS\)](#)
- **Infant formula:** Formulas generally contain iron: 0.4mg–1.3mg/100ml. Discourage the use of homemade infant formulas.
  - Formula composition and use [Alberta Health Services Compendium](#) and [Summary Sheet](#)
  - [Infant Formula: What you need to know \(Best Start\)](#) [Preparation Video and Tip sheets \(Best Start\)](#)
- Milk consumption range is consensus only & is provided as an approximate guide.
- Soy-based formula is not recommended for use in cow milk protein allergy or in preterm infants, and may interfere with absorption of T4 replacement therapy in infants with congenital hypothyroidism.  
[Soy-based formulas \(AAP\)](#)
- **Avoid all sweetened fruit drinks, sports drinks, energy drinks, and soft drinks;** restrict fruit juice consumption to a maximum of 1/2 cup (125 mL) per day. Limit the consumption of prepared food and beverage products that are high in sugar content.
- Limit/avoid consuming highly processed foods that are high in dietary sodium. [Dietary sodium \(CPS\)](#)
- Colic: [Dietary interventions for colic \(CPS\)](#)
- **Introduction to solids:** A few weeks before to just after 6 months, [guided by infant's readiness \(CPS\)](#) [Caring for Kids](#), start iron containing foods to avoid iron deficiency. A variety of soft texture foods, ranging from purees to finger foods, can be introduced.
- **Allergenic foods:** For all infants, including those at high risk for allergies, allergenic foods (especially eggs and peanut products) can be introduced with other solids around 6 months, but not before 4 months, as guided by the infant's signs of readiness. Once allergenic solids are introduced, they should be fed a few times a week to maintain tolerance.  
[Timing of introduction \(CPS\)](#) [Allergy check](#) [Food Allergy Canada](#)
- **Avoid honey until 1 year of age** to prevent botulism.
- **Dietary fat content:** Restriction of dietary fat during the first 2 years is not recommended since it may compromise the intake of energy and essential fatty acids, required for growth and development. After 2 years, a gradual transition begins from a high fat milk diet to a lower fat milk diet, as per [Canada's Food Guide](#).
- Promote family meals with independent/self-feeding while offering a variety of healthy foods.  
NHTI: [6–24 months](#) [Canada's Food Guide](#)
- Vegetarian diets: [Vegetarian diets in children and adolescents \(CPS\)](#)
- Fish consumption: 2 servings/week of low mercury fish: [Fish consumption and mercury \(HC\)](#)

## ENVIRONMENTAL HEALTH

[Global Climate Change and Health \(CPS\)](#) Health and Environment: [\(CPCHE\)](#) [\(AAP\)](#)

- **2nd hand smoke/E-cigs/Cannabis exposure:** There is no safe level of exposure. Advise caregivers to stop smoking and/or reduce 2nd hand smoke exposure, which contributes to childhood respiratory illnesses, SIDS, and neuro-behavioural disorders. Offer smoking cessation resources. Educate parents on the health risks and harms associated with e-cigs and cannabis (including edibles), and on safe storage.  
[Cannabis \(CPS\)](#)
  - Sun exposure/Sunscreen: Minimize sun exposure. Wear protective clothing, hats, properly applied sunscreen with SPF ≥ 30 for those > 6 months of age.
  - Insect bites/repellents: Prevent insect bites. No DEET in < 6 months; 6–24 months 10% DEET apply max once daily; 2–12 years 10% DEET apply max TID. [Preventing mosquito and tick bites \(CPS\)](#)
  - **Pesticides:** Ask about pesticide use and storage at home; avoid exposure. Wash all fruits and vegetables that cannot be peeled. [Food additives and child health \(AAP\)](#) [Pesticide Exposure in Children \(AAP\)](#)
  - **Lead:** There is no safe level of lead exposure in children. Evidence suggests that low blood lead levels can have adverse health effects on a child's cognitive function.  
**Blood Lead Screening** is recommended for children who:
    - in the last 6 months lived in a house or apartment built before 1960;
    - live in a home with recent or ongoing renovations or peeling or chipped paint;
    - have a sibling, housemate, or playmate with a prior history of lead poisoning;
    - live near point sources of lead contamination;
    - have household members with lead-related occupations or hobbies;
    - are refugees aged 6 months–6 years, within 3 months of arrival and again in 3–6 months.
    - have emigrated or been internationally adopted from a country where population lead levels are higher than in Canada.
    - are at risk of lead exposure from water pipes.
    - require diagnostic investigations for neurodevelopmental delays/disorders
- [Prevention of Childhood Lead Toxicity \(AAP\)](#) [Lead and Children \(CFP\)](#) [Kids new to Canada \(CPS\)](#)  
[Low-level lead exposure \(CPS\)](#) [Reduce your exposure to lead \(HC\)](#)

**INJURY PREVENTION:** In Canada, unintentional injuries are the leading cause of death in children and youth. Most of these preventable injuries are caused by motor vehicle collisions, suffocation, drowning, fire, poisoning, and falls. [Injury deaths in Canada \(PHAC\)](#). Unexplained injuries (e.g. fractures, bruising, burns) or injuries that do not fit the rationale provided or developmental stage raise concern for child maltreatment.

- **Transportation in motorized vehicles including cars, ATVs, snowmobiles, etc.:** [Transport Canada](#) [Child passenger safety \(AAP\)](#) [Preventing ATV injuries \(CPS\)](#) [Snowmobile safety \(Caring for Kids CPS\)](#)
  - Never leave a child unattended in a vehicle. Those < 13 years should sit in the rear seat, away from all airbags.
  - Car seats: Install and follow size recommendations as per specific car seat model, and keep in each stage as long as possible, until the weight and height limit of the seat is reached: Infant/toddlers in a rear-facing car seat; Children who weigh at least 10 kg in a forward-facing seat with a harness; Children who weigh at least 18 kg in a booster seat. Then use properly fitted lap and shoulder belt in the rear seat for children taller than 145 cm (4' 9") and < 13 years. Replace car seat if in a collision.
  - Children and youth younger than 16 years of age should not operate an ATV or a snowmobile, including youth models.
- **Bicycle:** wear **bike helmets** and advocate for helmet legislation for all ages. Replace if it has sustained impact or is > 5 years old. [Bicycle helmet legislation \(CPS\)](#)
- **Safe sleeping environment:** [Joint statement \(CPS/CFSIDS/CICH/HC/PHAC\)](#) [2016 task force on SIDS \(AAP\)](#)
  - Sleep position, bed sharing, and SIDS: Healthy infants should be positioned on their backs on a firm surface for every sleep. Counsel parents on the dangers of other contributory causes of SIDS such as bed sharing, overheating, maternal smoking, 2nd hand smoke, alcohol, or illicit or sedating drug use.
  - Positional plagiocephaly: While supine for sleep, the orientation of the infant's head should be varied to prevent positional plagiocephaly. Sleep positioners should not be used. After umbilical cord stump has detached, infants should have supervised tummy time while awake. [Positional plagiocephaly \(PCH\)](#)
  - Crib safety/Room sharing: Infants should sleep in a crib, cradle, or bassinet that meets [Health Canada regulations](#), is located in parents' room for the first 6 months of life, and is without soft objects, loose bedding, or similar items inside.
  - Swaddling: Proper swaddling of the infant may promote longer sleep periods but could be associated with adverse events (hyperthermia, SIDS, or development of hip dysplasia) if misapplied. A swaddled infant must always be placed supine with free movement of hips and legs, and the head uncovered. Swaddling is contraindicated once baby shows signs of attempting to roll. [Risks and Benefits of Swaddling \(AJMCN\)](#)
- **Pacifier use:** Counsel on safe and appropriate use. Pacifiers may decrease risk of SIDS and should not be discouraged in the 1st year of life after breastfeeding is well established, but should be restricted in children with chronic/recurrent otitis media. [Recommendations for pacifier use \(CPS\)](#)
- **Choking:** Avoid hard, small and round, smooth, and sticky solid foods until age 4 years. Encourage child to remain seated while eating and drinking. Use safe toys, follow minimum age recommendations, and remove loose parts and broken toys. [Preventing choking and suffocation in children \(CPS\)](#)
- **Drowning:** [Prevention of drowning \(AAP\)](#)
  - Bath safety: Never leave a young child alone in the bath. Do not use infant bath rings or bath seats.
  - Water safety: Recommend adult supervision, training for adults, 4-sided pool fencing with self-closing and latching gates, lifejackets, swimming lessons, and boating safety to decrease the risk of drowning.
- **Burns:** Install smoke detectors in the home on every level. Keep hot water at a temperature < 49°C. Be vigilant with hot liquids on counter-tops.
- **Poisons and other toxins:** Keep medicines and cleaners, and other toxic substances locked up and out of child's reach. Have Poison Control Centre number (PCC#) handy. Use of ipecac is contraindicated in children. Install carbon monoxide detectors.
- **Falls:** Assess home for hazards – never leave baby alone on change table or other high surface; use window guards and stair gates. Baby walkers are banned in Canada and should never be used. Ensure stability of furniture and TV. Advise against trampoline use at home. [Trampoline safety \(AAP\)](#)
- **Firearm safety:** Advise on removal of firearms from home or safe storage to decrease risk of unintentional firearm injury, suicide, or homicide. [Prevention of firearm injuries \(CPS\)](#)

## OTHER

- Advise parents against using **OTC cough/cold medications:** [Treating cough and cold \(CPS\)](#)
- **Complementary and alternative medicine (CAM):** Questions should be routinely asked about the use of complementary and alternative medicine, therapy, or products, especially for children with chronic conditions. [Natural health products \(Caring for kids, CPS\)](#) [Homeopathy \(CPS\)](#) [Chiropractic care \(PCH\)](#)
- **Fever advice/thermometers:** Fever ≥ 38°C in an infant < 3 months needs urgent evaluation. Ibuprofen and acetaminophen are both effective antipyretics. Acetaminophen remains the first choice for antipyresis under 6 months of age; thereafter ibuprofen or acetaminophen may be used. Alternating acetaminophen with ibuprofen for fever control is not recommended in primary care settings as this may encourage fever phobia, and the potential risks of medication error outweigh measurable clinical benefit.  
[Fever in the returning child traveller \(CPS\)](#) [Fever and temperature taking \(Caring for Kids CPS\)](#)
- **Footwear:** Shoes are for protection, not correction. Walking barefoot develops good toe gripping and muscular strength. [Footwear for children \(CPS\)](#)
- **Oral Health – Smiles for Life**
  - Teething: Discomfort can be managed by providing gum massage with a cold facecloth/teething ring and appropriate use of oral analgesics. E.g. acetaminophen (all ages), or ibuprofen if ≥ 6 mos. Anaesthetics/numbing gels and teething necklaces are contraindicated. [Dental devel \(CDA\)](#) [Homeopathic teething products \(FDA\)](#)
  - Dental Cleaning: As excessive swallowing of toothpaste by young children may result in dental fluorosis, children under 3 years of age should have their teeth and gums brushed twice daily by an adult using either water (if low risk for tooth decay) or a rice grain sized portion of fluoridated toothpaste (if at caries risk). Children 3–6 years of age should be assisted during brushing and only use a small amount (e.g. pea-sized portion) of fluoridated toothpaste twice daily. Caregiver should brush child's teeth until they develop the manual dexterity to do this alone, and should continue to intermittently supervise brushing after children assume independence. Begin flossing daily when teeth touch.
  - Caries risk factors include: child has caries or enamel defects, hygiene or diet is concerning, parent has caries, premature or LBW infant, or no water fluoridation.  
[Canadian Risk Assessment Tool](#) [Caries-risk assessment \(AAPDA\)](#)
  - To prevent early childhood caries: avoid juices/sweetened liquids and constant sipping of milk or natural juices in both bottle and cup.
  - Fluoride varnish should be used for those at caries risk. Consider dietary fluoride supplements only for high risk children who do not have access to systemic community water fluoridation. [Fluoride & your child \(CDA\)](#)
  - Consider the first dentist visit by 6 months after eruption of 1st tooth or at age 1 year.

**BEHAVIOUR** [Disruptive behaviour \(CPS/CACAP\)](#)

- **Crying:** Excessive crying may be caused by behavioural or physical factors or be the upper limit of the normal spectrum. Caregiver frustration with infant crying can lead to child maltreatment/inflicted injury (head injury, fractures, bruising). [The Period of Purple Crying](#).
- **Assess healthy sleep habits:** Normal sleep (quality and quantity for age) is associated with typical development and leads to better health outcomes. [Sleeping Behaviour \(EECD\)](#). Recommended sleep duration per 24 hrs: 12-14 hrs (infants 4-12 months); 11-14 hrs (1-2 yrs); 10-13 hrs (3-5 yrs); 9-12 hrs (6-12 yrs); 8-10 hrs (13-18 yrs). Turn off computer/TV screens 60 minutes before bedtime. No computer/TV screens in bedroom. [Recommended amount of sleep \(AASM\)](#)
- **Night waking:** Occurs in 20% of infants and toddlers who do not require night feeding. Counselling around positive bedtime routines (including training the child to fall asleep alone), removing nighttime positive reinforcers, keeping morning awakening time consistent, and rewarding good sleep behaviour has been shown to reduce the prevalence of night waking, especially when this counselling begins in the first 3 weeks of life. [Behaviour modification & sleep \(MJA\)](#) [Sleep problems & night wakings \(Sleep\)](#)

**PARENTING/DISCIPLINE** [Supporting Positive parenting \(CPS\)](#)

Inform parents that warm, responsive, flexible, and consistent discipline techniques are associated with positive child outcomes. Over reactive, inconsistent, cold, and coercive techniques are associated with negative child outcomes. Use of any physical punishment including spanking should be discouraged in all ages. [Effective discipline for children \(PCH\)](#)

Refer parents of children at risk of, or showing signs of, behavioural or conduct problems to structured parenting programs which have been shown to increase positive parenting, improve child compliance, and reduce general behaviour problems. Access community resources to determine the most appropriate and available research-structured programs. [Parenting skills \(EECD\)](#)  
e.g. [The Incredible Years®](#), [Triple P](#), [Strongest Families](#)

**HIGH RISK INFANTS/CHILDREN/PARENTS/CAREGIVERS/FAMILIES**

- **Maternal depression:** Physicians should have a high awareness of maternal depression, which is a risk factor for the socio-emotional and cognitive development of children. Although less studied, paternal factors may compound the maternal-infant issues. [Maternal depression and child development \(CPS\)](#)
- Fetal alcohol spectrum disorder (FASD). [Fetal Alcohol Spectrum Disorders \(AAP\)](#)
- Adoption/Foster care: Children newly adopted or entering foster care are a high risk population with special needs for health supervision. [Foster Care \(CPS\)](#) [International adoption \(Caring for Kids CPS\)](#)
- Immigrants/refugees: [Caring for kids new to Canada \(CPS\)](#) [CCIRH-Clinical Guidelines Cross-cultural communication \(CPS\)](#)
- Aboriginal children: [Social determinants of health in Aboriginal children in Canada \(PCH\)](#)
- **Social determinants of health (SDH):** Inquiry about impact of poverty: "Within the past 12 mos, did you worry that your food would run out before you got money to buy more, OR did the food not last and you didn't have money to get more?" [Food insecurity \(Pediatrics\)](#) [CLEAR tool kit](#) [Poverty Tool \(OCFP\)](#) [Social determinants of health \(CEPC\)](#) [Infrastructure to address SDH \(PCH\)](#)
- Prevention of child maltreatment:
  - Risk factors for child maltreatment:
    - Parent (low socio-economic status, maternal age <19 years, single parent family, non-biological parents, abused as child, substance abuse, lack of social support, unplanned pregnancy or negative parental attitude towards pregnancy).
    - Family (spousal violence, poor marital relations, poor child-parent relationship, unhappy family life).
    - Child (behaviour problems, disability).
  - Discuss with parents of preschoolers teaching names of genitalia, appropriate and inappropriate touch, and normal sexual behaviour for age.
  - Exposure to personal violence and other forms of violence has significant impact on physical and emotional well-being of children.
  - Assess home visit need: There is good evidence for home visiting by nurses during the perinatal period through infancy for first-time mothers of low socioeconomic status, single parents or teenage parents to prevent physical abuse and/or neglect. [Child maltreatment prevention \(USPSTF\)](#) [Bruising in suspected maltreatment cases \(CPS\)](#) [Abusive head trauma \(CPS\)](#) [INSPIRE: 7 strategies for ending violence against children \(WHO\)](#)

**NONPARENTAL CHILD CARE**

Inquire about current child care arrangements. High quality child care is associated with improved paediatric outcomes in all children. Factors enhancing quality child care include: practitioner general education and specific training; group size and child/staff ratio; licensing and registration/accreditation; infection control and injury prevention; and emergency procedures. [Health implications of children in child care centres \(PCH\): Part A and Part B](#) [Guide to child-care in Canada \(CPS\): Well Beings](#)

**LITERACY**

Encourage parents to read and sing to their infants and children and to limit TV, video and computer games to provide more opportunities for reading. [Read, speak, sing: promoting literacy \(CPS\)](#) [Literacy Promotion \(AAP\)](#) [Reading aloud to children: the evidence \(Arch Dis Child\)](#)

**FAMILY HEALTHY ACTIVE LIVING/SEDENTARY BEHAVIOUR/SCREEN TIME**

[Healthy active living \(CPS\)](#) [CSEP guidelines](#) [Screen time and young children \(CPS\)](#)  
Encourage increased physical activity, with parents as role models, through interactive floor-based play for infants and a variety of activities for young children, and decreased sedentary pastimes.  
• Media use: Counsel on appropriate media use; for children <2 years, screen time (eg, TV, computer, electronic games) is not recommended except for video-chatting; for children 2-4 years, screen time should be limited to <1 h/day; less is better; educational and prosocial programming is better.

**DEVELOPMENT**

Manoeuvres are based on evidence-based literature on milestone acquisition. [Evidence-based milestone ages \(PCH\)](#). They are not a developmental screen, but rather an aid to developmental surveillance. They are set after the time of typical milestone acquisition. Thus, absence of any one or more items is considered a high-risk marker and indicates consideration for further developmental assessment, as does parental or caregiver concern about development at any stage. [Assessment tools Table 4 \(CPS\)](#) [Global Delay \(CPS\)](#) - [Best Start](#) website contains resources for maternal, newborn, and early child development - [Getting it right at 18 months \(CPS\)](#) [Measuring in support of early childhood development \(CPS\)](#) - [Identifying and treating speech & language delays \(PCH\)](#) [Encyclopedia on Early Childhood Development](#)

**TOILET LEARNING**

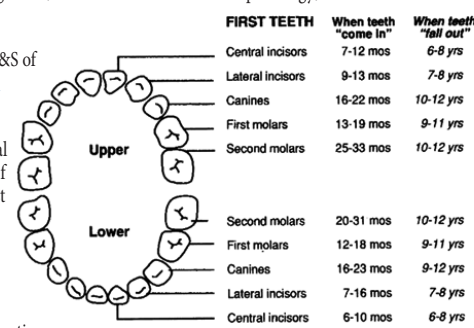
The process of toilet learning has changed significantly over the years and within different cultures. In Western culture, a child-centred approach is recommended, where the timing and methodology of toilet learning is individualized as much as possible. [Toilet learning \(CPS\)](#) [Toilet-training strategy \(PCH\): Part A](#) [Part B](#)

**AUTISM SPECTRUM DISORDER**

Specific screening for ASD at 18-24 months should be performed on all children with any of the following risk factors: failed items on the social/emotional/communication skills inquiry, sibling with autism, or developmental concern by parent, caregiver, or physician. Increased prevalence for ASD is also associated with prematurity, and certain chromosomal, genetic and neurological disorders. Standardized, evidence-based screening tools for detection of early ASD symptoms should be used as per guidelines. ASD (CPS): [Early detection](#) [Diagnostic assessment](#) [Management](#) [M-CHAT™](#)

**PHYSICAL EXAMINATION**

- **Jaundice:** Bilirubin testing (total and conjugated) if persists beyond 2 wks of age. [Neonatal Hyperbilirubinemia Guidelines \(CPS\)](#) [Newborn screening for biliary atresia \(AAP\)](#).
- **Bruising:** Unexplained bruising warrants evaluation re: child maltreatment or medical illness.
- **Blood pressure:** Check BP at all visits for those at risk > 3 yrs old. Some risk factors: obesity, sleep-disordered breathing, prematurity, renal disease, congenital heart disease, diabetes, or on meds that ↑ BP. High blood pressure in children, including definitions: [\(NIH Working Group\)](#) [\(AAP\)](#)
- **Fontanelles:** The posterior fontanelle is usually closed by 2 months and the anterior by 18 months. [The Abnormal fontanel \(AAFP\)](#)
- **Vision inquiry/screening:** [Vision screening \(CPS\)](#)
  - Check Red Reflex for serious ocular diseases such as retinoblastoma and cataracts.
  - Corneal light reflex/cover-uncover test & inquiry for strabismus: With the child focusing on a light source, the light reflex on the cornea should be symmetrical. Each eye is then covered in turn, for 2-3 seconds, and then quickly uncovered. The test is abnormal if the uncovered eye "wanders" OR if the covered eye moves when uncovered.
  - Check visual acuity at age 3-5 years.
- **Hearing inquiry/screening:** Language delay or parental concerns about hearing acuity should prompt a rapid referral for hearing assessment. Formal audiology testing should be performed in all high-risk infants, including those with normal UNHS. Older children should be screened if clinically indicated.
- Inspect tongue mobility for ankyloglossia if breastfeeding problems. [Ankyloglossia and breastfeeding \(CPS\)](#)
- Check palate for cleft [Cleft lip/palate \(AAP\)](#)
- **Tonsil size/sleep-disordered breathing:** Screen for sleep problems. Behavioural sleep problems and snoring in the presence of sleep-disordered breathing warrants assessment re: obstructive sleep apnea (OSA). [OSA \(AAP\)](#)
- **Dental:** Examine for problems including caries, oral soft tissue infections or pathology; and for normal teeth eruption sequence. [CRAT](#)
- Check neck for torticollis.
- **Umbilicus:** Gently pat dry and review S&S of infection. [Preventing sepsis \(Cochrane\)](#)
- **Hips:** There is insufficient evidence to recommend routine diagnostic imaging for screening for developmental dysplasia of the hips, but examination of the hips should be included until at least one year, or until the child can walk. Exam includes assessing limb length discrepancy and asymmetric thigh or buttock (gluteal) creases; performing Ortolani manoeuvre (usually negative after 3 mos); and testing for limited abduction (usually positive after 3 mos). Consider selective imaging between 6 wks and 6 mos if risk factor (i.e. breech, family history, hip instability on physical exam). [DDH \(AAP\)](#)
- **Muscle tone:** Assessment should be performed for abnormal tone or deep tendon reflexes, or for asymmetric movements (moving one side more than other). These may be early signs of cerebral palsy or neuromotor disorder and suggest the need for further assessment. [CP Features \(DM&CN\)](#)
- **Spine/Anus:** Examine spine for cutaneous signs of occult spinal dysraphism. Check anal patency. [Congenital Brain and Spinal Cord Malformations \(AAP\)](#)



**INVESTIGATIONS/SCREENING**

- **Anemia screening:** Screening for iron deficiency anemia should be considered between 6 and 18 months of age for infants/children from high risk groups: E.g. Low SES; Indigenous communities; newly arrived refugee, internationally adopted and immigrant children from resource-poor countries; low-birth-weight and premature infants; infants/children fed whole cow's milk before 9 months of age or at quantities > 500 mls/day; prolonged bottle feeding beyond 15 months of age; or sub-optimal intake of iron-containing foods. Beyond this age, anemia screening as per additional risk factors. [Iron requirements \(CPS\)](#)
- **Hemoglobinopathy screening:** Screen all neonates from high-risk groups: Asian, African & Mediterranean.
- **Universal newborn hearing screening (UNHS):** Effectively identifies infants with congenital hearing loss and allows for early intervention & improved outcomes. [Universal newborn hearing screening \(CPS\)](#)
- **Tuberculosis - TB skin testing:** For up-to-date information, see [Canadian TB Standards: 2014](#)

**Disclaimer:** Given the constantly evolving nature of evidence and changing recommendations, the Rourke Baby Record is meant to be used as a guide only.

Financial support has been provided by the Government of Ontario.

For fair use authorization, see [www.rourkebabyrecord.ca](#).



## ROUTINE IMMUNIZATION

• See the [Canadian Immunization Guide](#) for recommended immunization schedules for infants, children, youth, and pregnant women from the [National Advisory Committee on Immunization \(NACI\)](#).

• **Provincial/territorial immunization schedules** may differ based on funding differences. Provincial/territorial immunization schedules are available at the [Public Health Agency of Canada](#).

• **Immunization pain reduction strategies:** During vaccination, pain reduction strategies with good evidence include breastfeeding or use of sweet-tasting solutions, giving the most painful vaccine last, and consideration of topical anaesthetics. [Reducing vaccine pain \(CMAJ\)](#)

• Acetaminophen or ibuprofen should not be given prior to, but after vaccination as required. [Prophylactic Antipyretic Administration \(PLOS ONE\)](#)

• Information for physicians on vaccine safety:

- [Canada's vaccine safety program \(CPS\)](#)
- [Autism spectrum disorder: No causal relationship with vaccines \(PCH\)](#)

• Information for parents on vaccinations can be accessed through:

- [ImmunizeCA](#)
- [Caring for Kids website \(CPS\)](#) including [Your Child's Best Shot](#)
- [A Parent's Guide to Vaccination \(PHAC\)](#)
- [Working with vaccine-hesitant parents \(CPS\)](#)
- [Deciding to vaccinate \(HC\)](#)
- [Addressing vaccine hesitancy \(CFP\)](#)

## VACCINE NOTES

(Adapted from websites of NACI and the Canadian Immunization Guide September 2019)

• **Diphtheria, Tetanus, acellular Pertussis, inactivated Polio virus vaccine, and Haemophilus influenzae B (DTaP-IPV-Hib):** DTaP-IPV-Hib vaccine may be used for all doses in the vaccination series in children < 2 years of age, and for completion of the series in children < 5 years old who have received ≥ 1 dose of DPT (whole cell) vaccine (e.g. recent immigrants).

• **Diphtheria, Tetanus, acellular Pertussis, inactivated Polio virus vaccine, Haemophilus influenzae B, and Hepatitis B (Hep B) (DTaP-IPV-Hib-Hep B)** is used for 3 of the 4 initial doses in some jurisdictions with routine infant Hep B vaccination programs.

• **Diphtheria, Tetanus, acellular Pertussis, inactivated Polio virus vaccine (DTaP-IPV)** may be used up to age 7 years and for completion of the series in incompletely immunized children 5-7 years old (healthy children ≥ 5 years of age do not require Hib vaccine).

• **Tetanus, Diphtheria, Pertussis, Polio (Tdap-IPV) Vaccine,** a quadrivalent vaccine containing less pertussis and diphtheria antigen than the preparations given to younger children and less likely to cause local reactions, is used for the preschool booster at 4-6 years of age in some jurisdictions and should be used in all individuals > 7 years of age receiving or completing their primary series.

• **Diphtheria, Tetanus, acellular Pertussis vaccine (dTdap)** is used for booster doses in people ≥ 7 years of age. All adults should receive at least one dose of pertussis containing vaccine (excluding the adolescent booster). Immunization with dTdap should be offered to all pregnant women (≥13 weeks of gestation, ideally at 27 – 32 weeks) to provide immediate protection to infants less than 6 months of age.

• **Haemophilus influenzae type b conjugate vaccine (Hib):** Hib is usually given as a combined vaccine (DTaP-IPV-Hib above). If required and not given in combination, Hib is available as Haemophilus b capsular polysaccharide – PRP conjugated to tetanus toxoid (Act-HIBTM or HiberixTM). The number of doses required depends on the age at vaccination and underlying health status.

• **Rotavirus vaccine:** Universal rotavirus vaccine is recommended by NACI and CPS. Two oral vaccines are currently authorized for use in Canada: Rotarix (2 doses) and RotaTeq (3 doses). Dose #1 is given between 6 weeks and 14 weeks+6 days with a minimum interval of 4 weeks between doses. Maximum age for the last dose is 8 months/0 days. [Recommendations for the use of rotavirus vaccines in infants \(CPS\)](#)

• **Measles, Mumps and Rubella vaccine (MMR), and MMR-varicella (MMRV):** The first dose is given at 12-15 months and a second dose should be given with the 18 month or preschool dose of DTaP-IPV (±Hib) (depending on the provincial/territorial policy), or at any intervening age that is practical but at least 4 weeks after the first if MMR, or 3 months after the first if MMRV. If MMRV is not used, MMR and varicella vaccines should be administered concurrently, at different sites, or separated by at least 4 weeks.

• **Varicella vaccine:** Children aged 12 months to 12 years who have not had varicella should receive 2 doses of varicella vaccine (univalent varicella or MMRV). Unvaccinated individuals ≥ 13 years who have not had varicella should receive two doses at least 28 days apart (univalent varicella only). Consult NACI guidelines for recommended options for catch-up varicella vaccination. Varicella and MMR vaccines should be administered concurrently, at different sites if the MMRV [combined MMR/varicella] vaccine is not available, or separated by at least 4 weeks. [Preventing varicella \(PCH\)](#)

• **Hepatitis B vaccine (Hep B):**

- Hepatitis B vaccine can be routinely given to infants or preadolescents, depending on the provincial/territorial policy. The first dose can be given at 1 month, or at 2 months of age to fit more conveniently with other routine infant immunization visits. The second dose should be administered at least 1 month after the first dose, and the third at least 2 months after the second dose, but again may fit more conveniently into the 4- and 6-month immunization visits. Alternatively, Hep B can be administered as DTaP-IPV-Hib-HepB vaccine in infants, with the first dose at 2 months of age. A two-dose schedule for adolescents is an option.

- For infants born to a mother with acute or chronic hepatitis B (HBsAg-positive), the first dose of Hep B vaccine should be given at birth (with Hepatitis B immune globulin) and repeat doses of vaccine at 1 and 6 months of age. Premature infants of birthweight less than 2,000 grams, born to HB- infected mothers, require four doses of HB vaccine at 0, 1, 2, and 6 months. The last dose should not be given before 6 months of age. Infants of HBsAg-positive mothers also require Hepatitis B immune globulin at birth and follow-up immune status at 9–12 months for HBV antibodies and HBsAg.

- Infants with HBsAg-positive fathers, siblings, or other household contacts require Hepatitis B vaccine at birth, and at 1 month, and 6 months of age.

- Hepatitis B vaccine should also be given to all infants from high-risk groups, such as:

- infants where at least one parent has emigrated from a country where Hepatitis B is endemic;
- infants of mothers positive for Hepatitis C virus;
- infants of substance-abusing mothers.

- For children in medically high risk groups (e.g. immunocompromising conditions, chronic renal failure, dialysis), see [Hepatitis B chapter in the Canadian Immunization Guide](#) for schedules re: timing and number of Hep B vaccine doses and monitoring of HB antibody levels.

• **Hepatitis A or A/B combined (HAHB – when Hepatitis B vaccine has not been previously given):**

- Children 6 months and older in high-risk groups should receive 2 doses of the hepatitis A vaccine given 6-36 months apart (depending on product used). HAHB is the preferred vaccine for individuals with indications for immunization against both hepatitis A and hepatitis B, who are ≥12 months unless medical condition indicates high dose Hep B vaccine required.

- These vaccines should also be considered when traveling to countries where Hepatitis A or B are endemic.

- Possible HAHB schedules include 12 months to 18 years: 2 doses at months 0 and 6-12; OR 3 doses at months 0, 1, and 6 depending on age and product used.

• **Pneumococcal vaccine: conjugate (Pneu-C-13) and polysaccharide (Pneu-P-23):**

Recommended schedule, number of doses, and product depend on the age of the child, risk for pneumococcal disease, and when vaccination is begun. Consult NACI guidelines. Routine infant immunization: administer three doses of Pneu-C-13 vaccine at minimum 8-week intervals beginning at 2 months of age, followed by a fourth dose at 12 to 15 months of age. For healthy infants, a three-dose schedule may be used, with doses at 2 months, 4 months, and 12 months of age. Children 2 years and above who are at highest risk of invasive pneumococcal disease should receive Pneu-P-23. Consult NACI guidelines for eligibility and dosing schedule.

• **Meningococcal vaccine:**

- Canadian children should be immunized with a MCV-C at 12 months of age, or earlier depending on provincial/territorial vaccine programs; suggested one dose at 12 months of age.

- MCV-4 (A, C, Y, W) should be given to children two months of age and older who are at increased risk for meningococcal disease or who have been in close contact with a case of invasive meningococcal A,C,Y, or W disease. MCV-4-CRM (MenveoTM) should be used for those less than 2 years old; any MCV-4 may be used for older children.

- A routine booster dose with MCV-4 or MCV-C is recommended at approximately 12 years of age. High risk children require boosters at 5 year intervals.

- MCV-4 should be given to children two months of age and older travelling to areas where meningococcal vaccine is recommended. MCV-4 CRM is recommended for immunization of children 2 months to less than 2 years of age. Any MCV-4 may be used for older children.

- Multi-component meningococcal serogroup B (4CMenB) vaccine should be considered for active immunization of children ≥ 2 months of age who are at high risk of meningococcal disease or who have been in close contact with a case of invasive meningococcal B disease or travelling to an area where risk of transmission of meningococcus B is high. Two to 3 doses are required at 4 or 8 wk intervals depending on age.

- Routine prophylactic administration of acetaminophen after immunization and/or separating 4CMenB vaccination from routine vaccination schedule may be considered for preventing fever in infants and children up to 3 years of age.

• **Influenza vaccine:** Recommended for all children, particularly those aged 6-59 months and other children at high risk.

- Previously unvaccinated children up to 9 years of age require 2 doses with an interval of at least 4 weeks. The second dose is not required if the child has received one or more doses of influenza vaccine during the previous immunization season. A quadrivalent vaccine should be used if available.

- For children between 6 and 23 months, the quadrivalent inactivated influenza vaccine (QIV) should be used, and if not available, either unadjuvanted or adjuvanted trivalent inactivated vaccine (TIV).

- Children 2-18 years of age should be given QIV, or quadrivalent live attenuated influenza vaccine (LAIV) if not contraindicated. If a quadrivalent vaccine is not available, TIV should be used. Egg allergy is not a contraindication to vaccination with QIV, TIV, or LAIV.

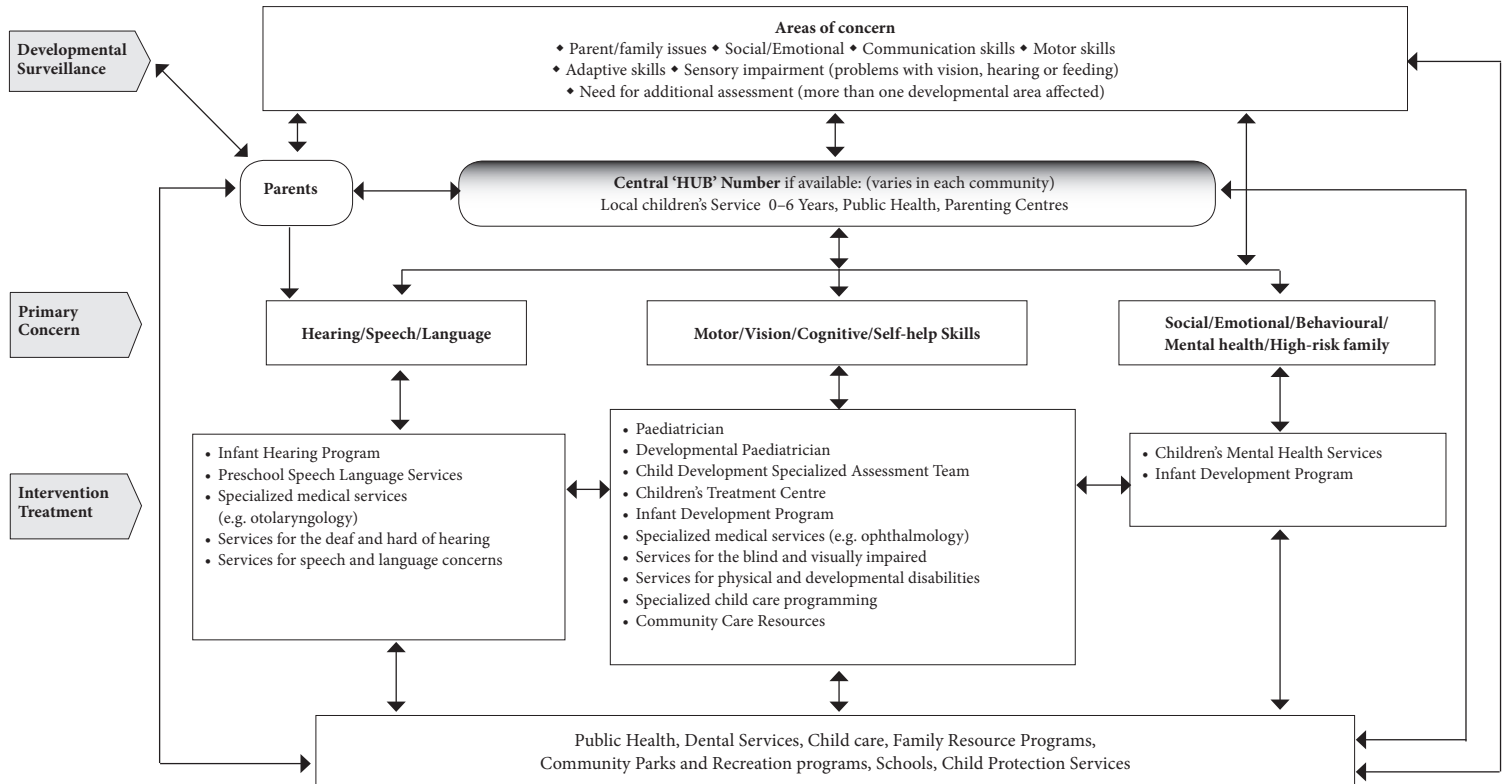
- Immunize with TIV or QIV in the second or third trimester to provide protection for the pregnant woman and infant <6 months of age.

- LAIV is contraindicated for children i) with immune compromising conditions, ii) with severe asthma (defined as current active wheezing or currently on oral or high-dose inhaled glucocorticosteroids, or medically attended wheezing within the previous 7 days), or iii) on aspirin.

• **Respiratory syncytial virus (RSV) vaccine:** Palivizumab (Synagis) prophylaxis during RSV season for children with chronic lung disease, congenital heart disease, or born preterm. [Preventing hospitalizations for respiratory syncytial virus infection \(CPS\)](#)



### Early Child Development and Parenting Resource System



### Local Resources and Referrals

Service	Contact person	Phone number	Website	Other